

TAS 177

Concept Folding 177

TAS 177 Concept Folding 177
TAS 177-SL Concept Folding 177 Slim Line

- State-of-the-art standalone folding system
- Freedom in configurations, in- and outward opening
- Various AWW performance levels
- Aesthetical solutions with low thresholds and slim line profiles
- Meeting higher market requirements
- Compatible with the existing CS product range



TAS 177

Concept Folding 177

New features:

- Opening types with end-cariage (slide 8)
- Testing up to a water resistance of 600 Pa (slide 9)
- Bottom solution with double weather seal, ideal for renovations (slide 9)
- Gasket pieces to improve sealing at the hinges (slide 27)
- New lock and receivers for lower vent heights (slide 22)



TAS 177



Openness

Flexibility

Bringing the outside to the inside

TAS 177

Completely new designed standalone folding system

Fabricators

- **In- and outward opening** with the **same profiles and accessories**
- **Minimum number of profiles**
- **Adjustability** on site
- Innovative locking mechanism, **easy to assemble**

Architects

- **2 Design variants:** Functional (TAS 177) and Slim Line (TAS 177-SL)
- **Large vent sizes** (W: 48", H: 118") allowing transparent constructions
- Vent weight up to 264 pound for all configurations
- Different opening **configurations** and bottom solutions
- Different (design) handle options

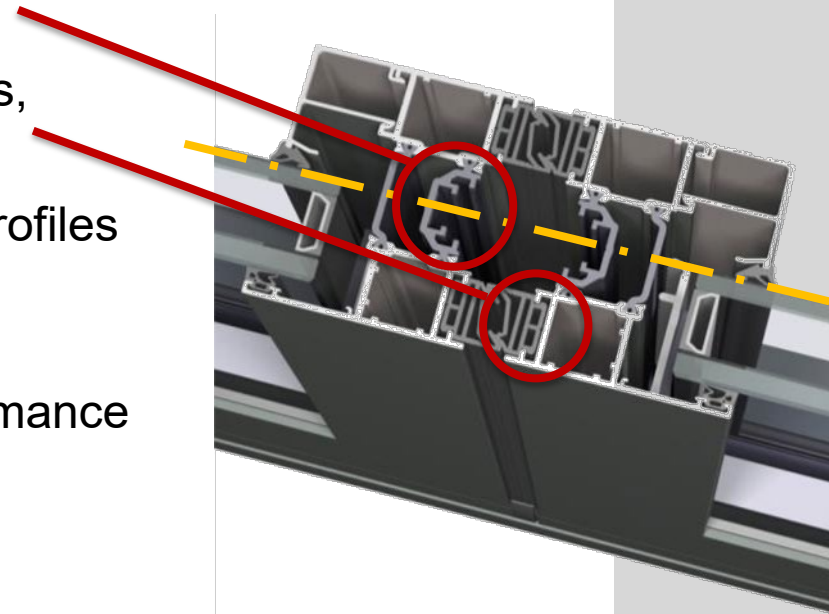
End user

- **Highly insulating:** fulfilling the most recent and near future market demands
- **Different performance solutions** to cover different needs and wishes
- Option for the first leaf: with **window functionality or door functionality**
- **In- and outward opening**
- Future extension: **WK II** anti-burglar solution

TAS 177

Innovative

- Symmetrical design of vent profile
- Central accessory groove in insulation strip for window locking gear
- 2 outer grooves for rolling accessories, hinges and gaskets
- In- and outward opening with same profiles & accessories = Logistic advantage
- U-shaped Reynaers groove: Better fit locking points for higher AWW performance



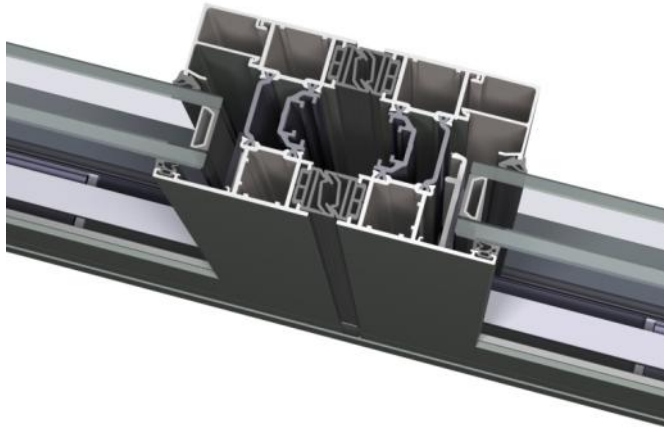
TAS 177

Configurations

- Choice in design: with only one different vent profile

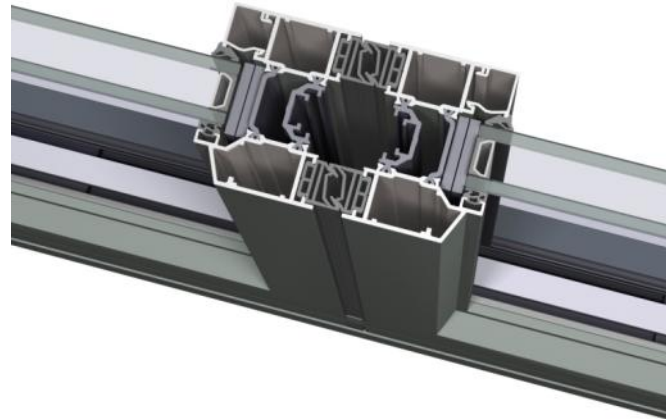
Functional: TAS 177

- Visible width 48"
- CS Glazing beads & transoms



TAS 177-SL

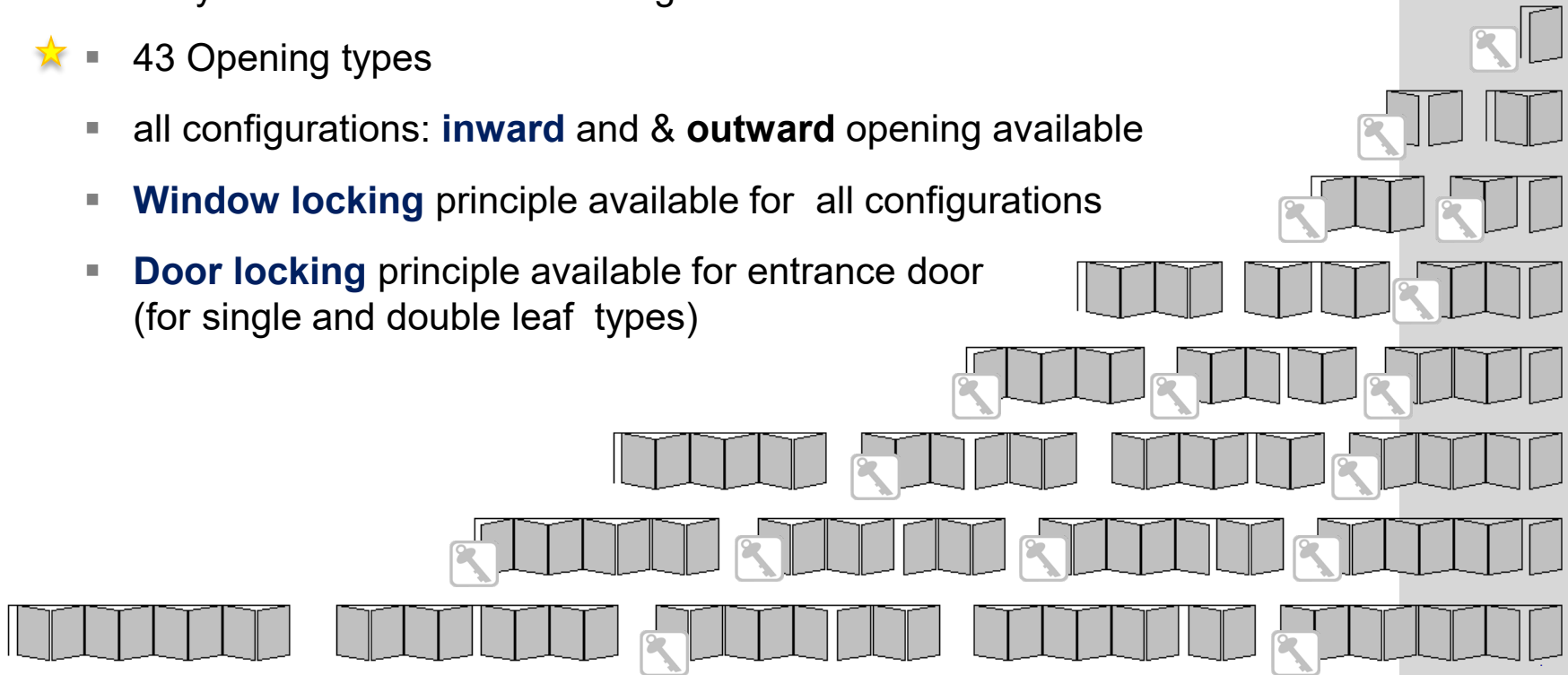
- Slim Line
- Specific vent profile
- Visible width 5 7/8"
- CS 38-SL Glazing beads & transoms




TAS 177

Configurations

- 2 styles: **Functional** & **SL** design
- ★ ▪ 43 Opening types
- all configurations: **inward** and **outward** opening available
- **Window locking** principle available for all configurations
- **Door locking** principle available for entrance door (for single and double leaf types)

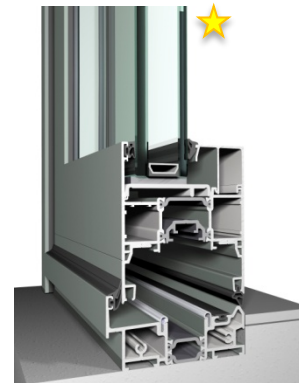



 Also available with
door locking gear

Texas
Aluminum
Systems

TAS 177

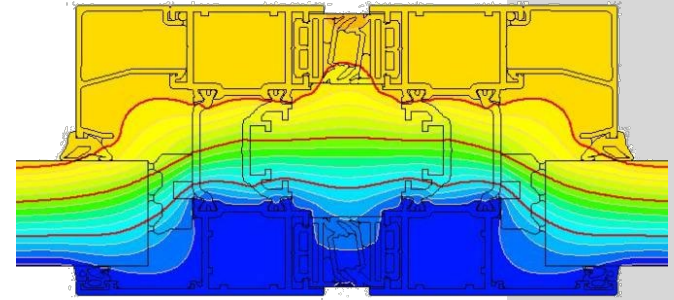
- Bottom solutions
 - 4 bottom solutions = 6 AWW level solutions in total



	✓ Optimal Accessibility  ✓ Aesthetical bottom solution ✓ Economical solution	✓ Easy passing (18mm threshold) ✓ Elementary AWW rating ✓ Weather seal	✓ Double weather seal ✓ Suitable for renovation	✓ High performance ✓ Double weather seal ✓ 3 Different performance levels in one profile
Air	None	Class 2	Class 2	Up to Class 4
Wind	None	Class B2	Class B2	Up to Class B3
Water	None	Class 4A (150 Pa)	Class 5A (200 Pa)	Up to Class 9A (600 Pa)★

TAS 177

Insulation



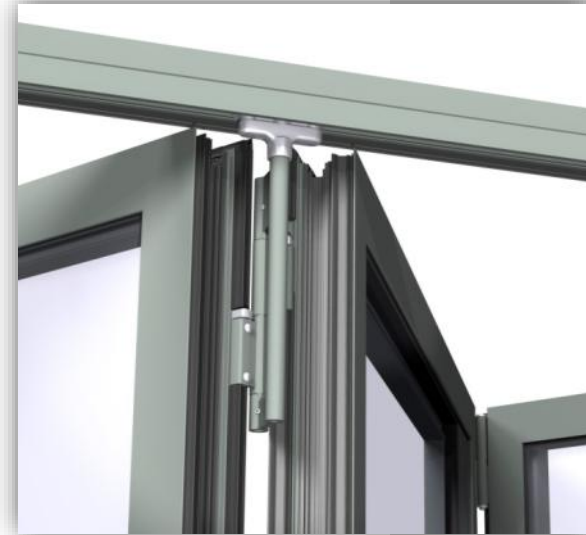
- Meeting actual and near future market and regulation requirements
- Reaching U_w values down to **1.2 W/m²K**, for an element of 4x2.7m with an U_g of 0.6 W/m²K
- Insulation levels for standard element and glazing:

Type	Style	AWW Perf.	Pex-foam	U_g	U_f up to ...	Ψ	U_w
4-3-1	Funct	Low	No	1.1	2.74	0.07	1.70
"	(HI var.)	Low	Yes	1.1	2.25	0.07	1.63
4-3-1	SL	Low	No	1.1	2.55	0.07	1.64
"	(HI var.)	Low	Yes	1.1	2.31	0.07	1.61

TAS 177

Technical specifications

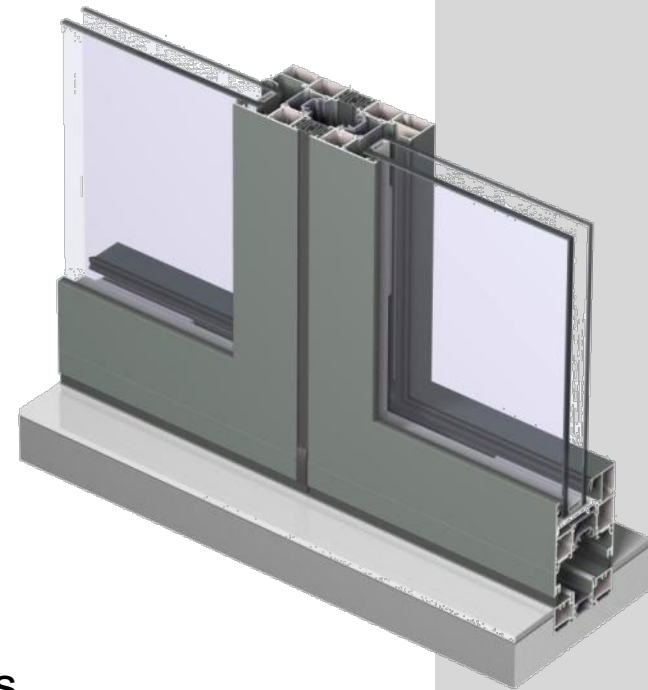
- Bottom rolling:
 - Vent weights up to **260** Pound for all configurations
 - optimal for refurbishment
 - Integrated rolling accessories
- Vent dimensions:
 - Width up to **48"**
 - Height up to **118"**
- Large variety in configurations from 1 to 8 vents
- Glass thickness between
 - 1/4" and 2 1/2" (Functional)
 - 3/8" and 1 7/8" (SL)



CF 77

Integration in Reynaers product range

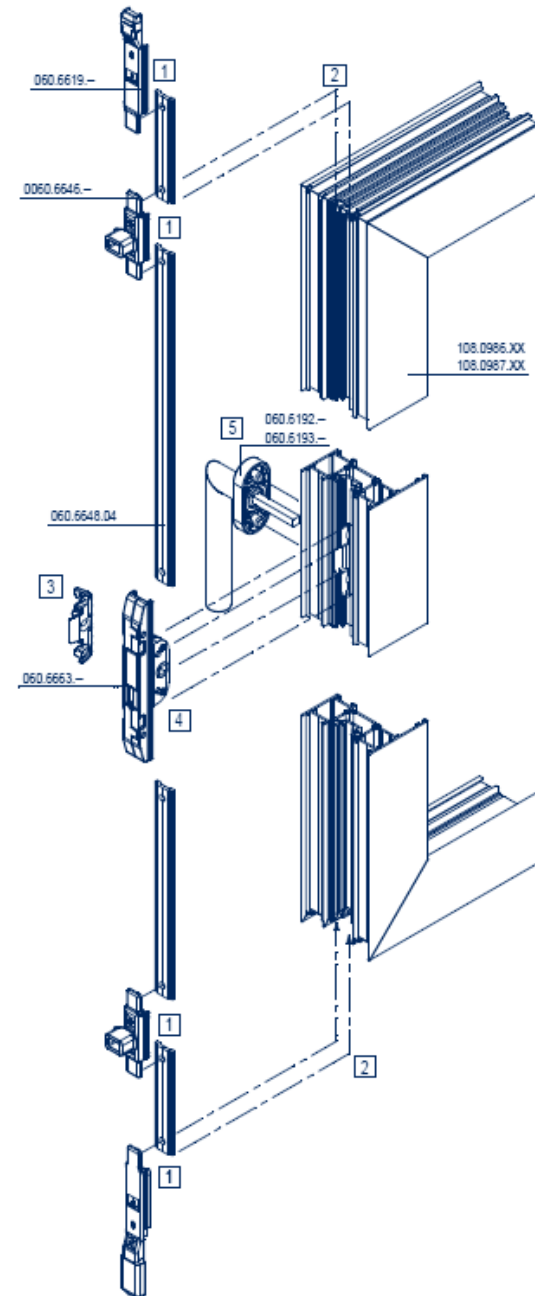
- Build-in depth of 3"
- compatible with the existing CS product range
- Dedicated profiles
Partial re-use of standard CS gaskets and accessories:
 - Glazing gaskets
 - Design handles
 - Corner cleats & T-brackets
 - Rebate supports
 - ...
- Re-use of standard CS details & glazing beads



TAS 177

Gear

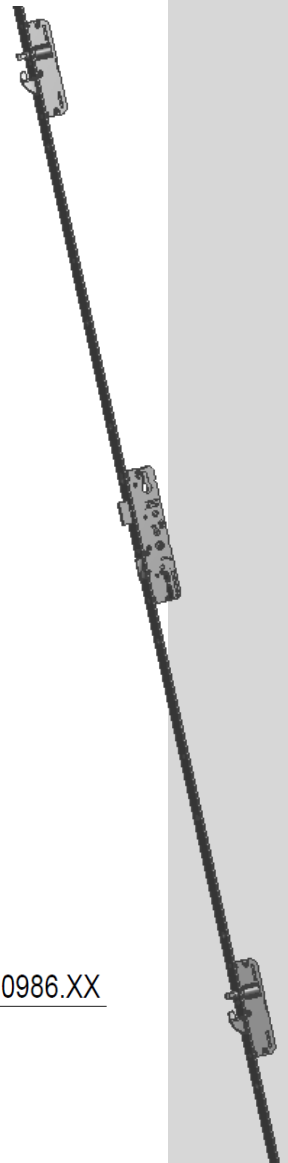
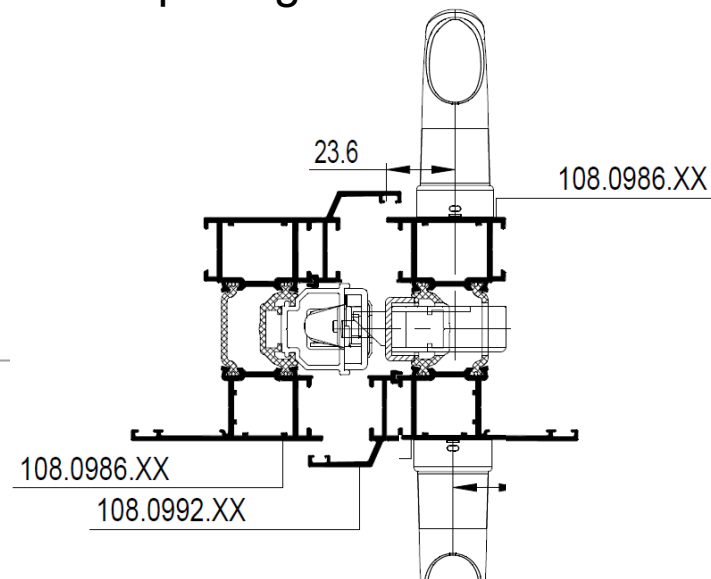
- Window locking principle:
 - Flexible polyamide standard link bar
 - Minimal milling required
 - Low amount of waste & ease of fabrication
 - Different locking point combinations depending on AWW requirements:
- Functional locking (low AWW performance):
 - Locking device
 - Link bar
 - Closing latch top & closing latch bottom
 - NO corner drives
- AWW locking
 - Additional vertical locking points



TAS 177

Gear

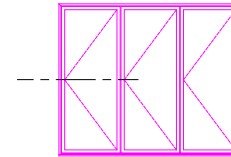
- Optional door locking principle > first leaf as an entrance door:
- 5-point pen-hook lock with the following specifications:
 - Stainless steel front plate
 - Stainless steel receiver, adjustable.
 - handle operated with possibility to lock with PZ cylinder
- Integrated double casement locking mechanism for the second vent in the case of a double opening leaf.



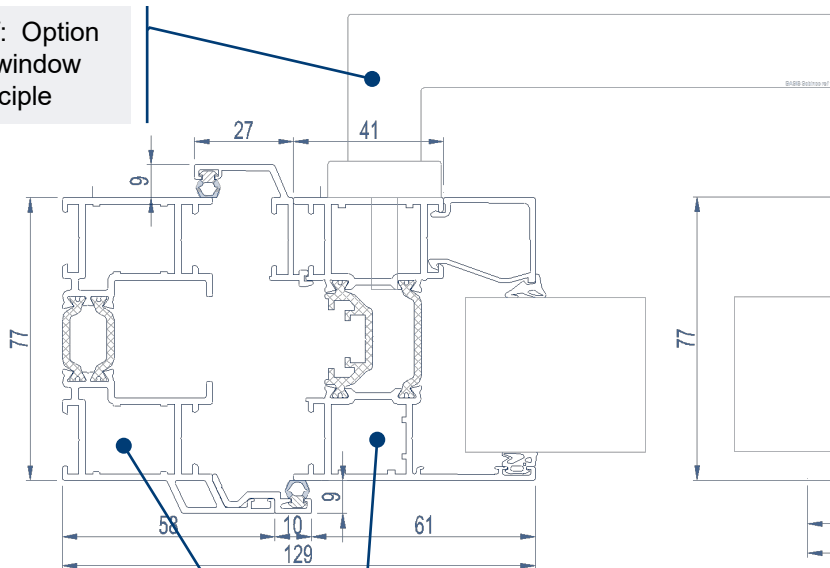
TAS 177

Principles

- First leaf



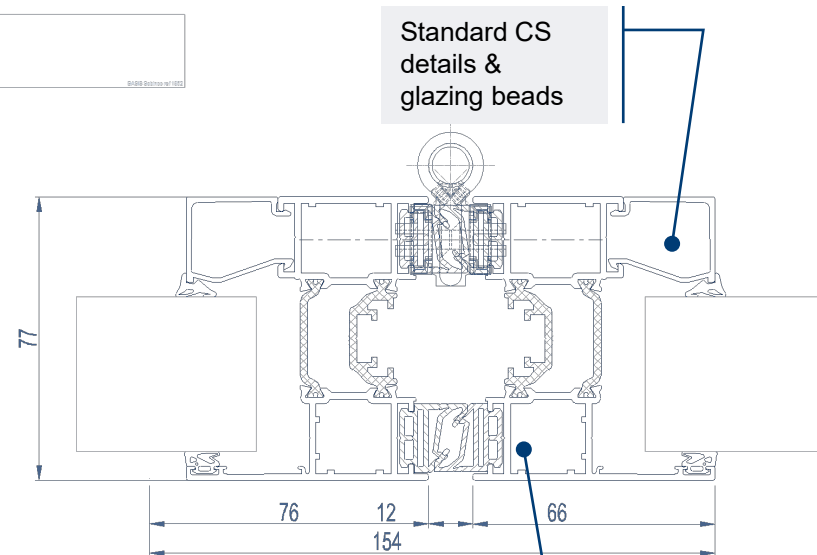
On first leaf: Option for door or window locking principle



Frame profile in mitre on top: crimpable or screwable

Vents can be crimped or screwed

Standard CS details & glazing beads

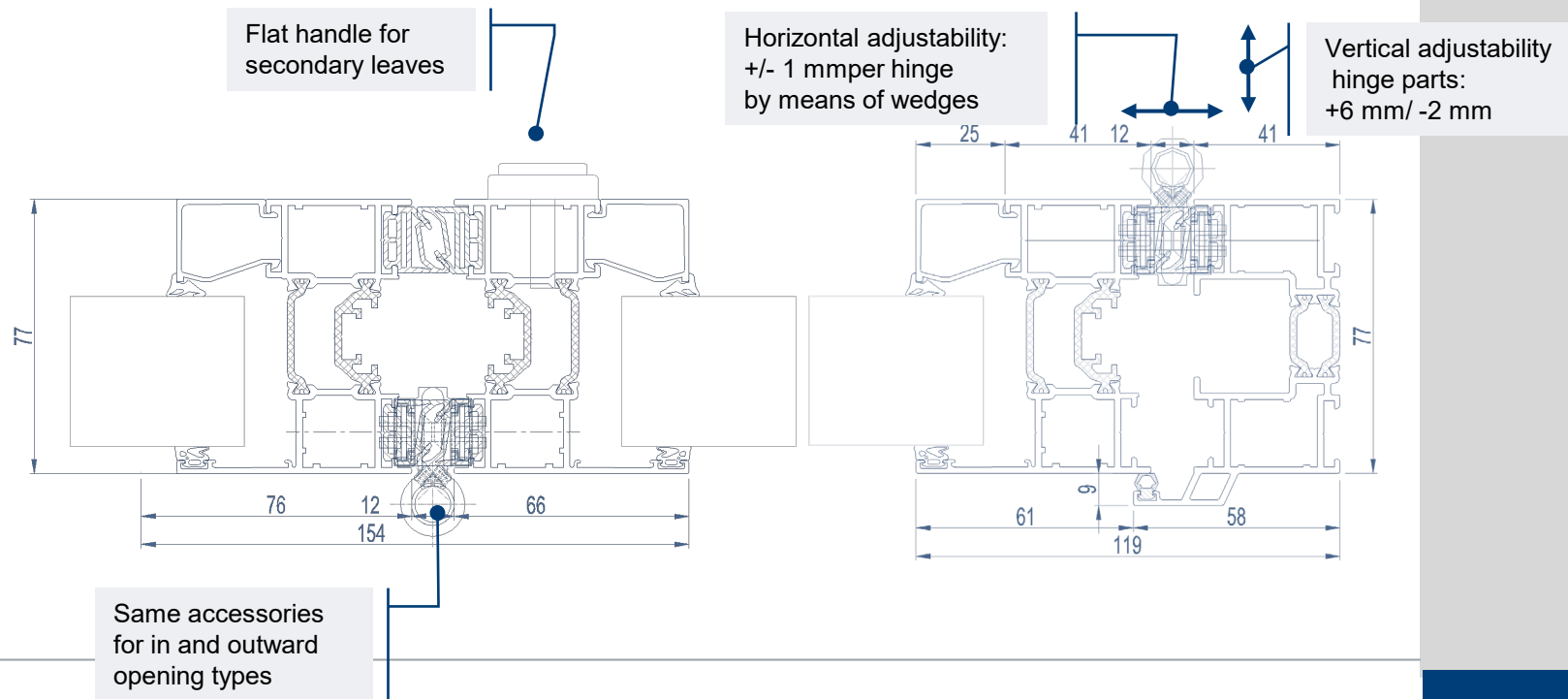


Same vent profile all around

TAS 177

Principles

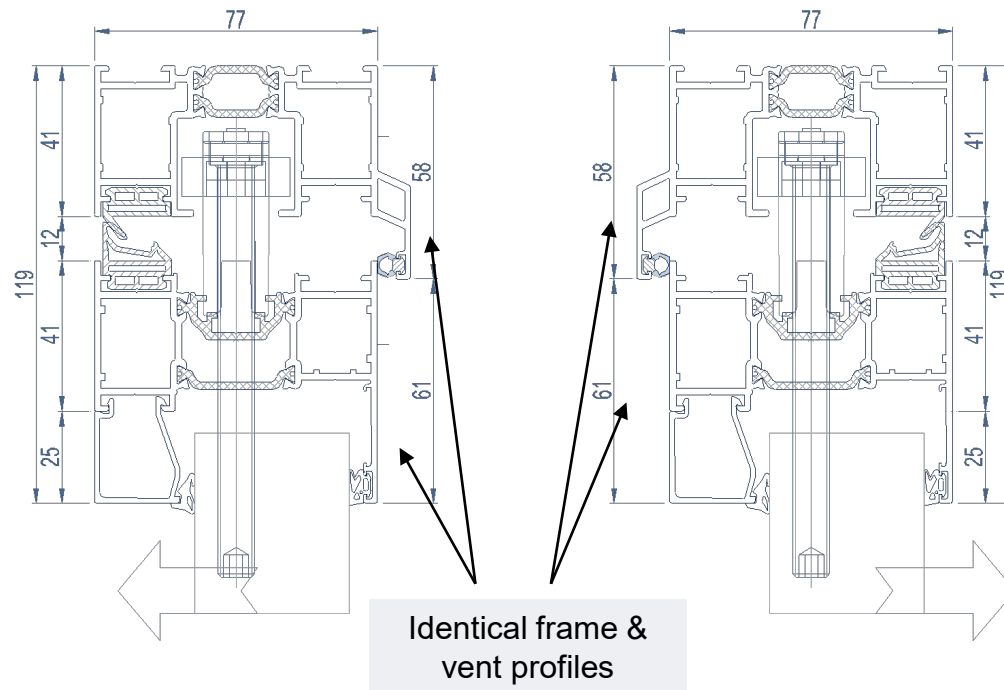
- Folding leaves



TAS 177

Principles

- Vertical sections



⇨ Outward opening
⇩ Inward opening

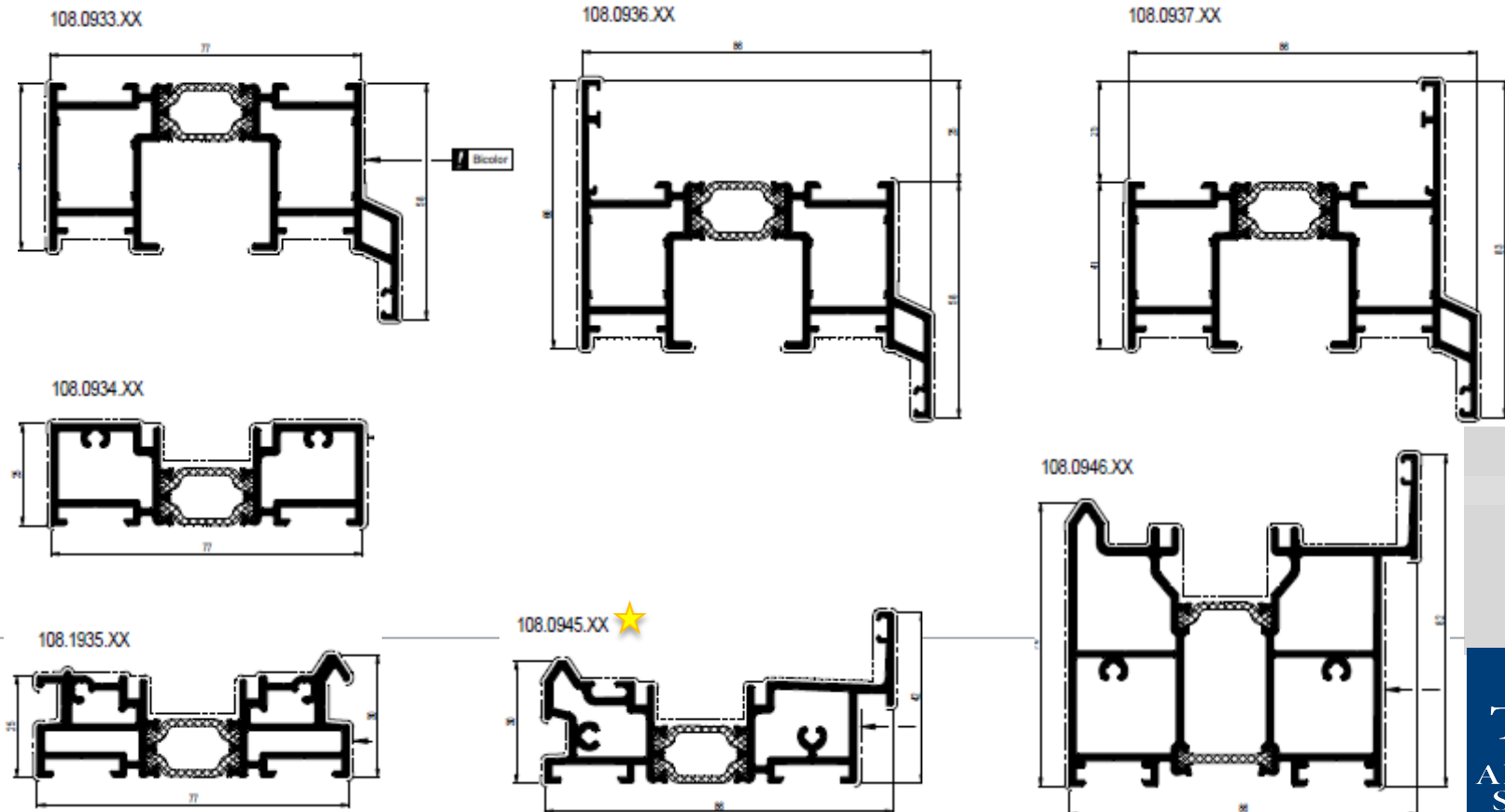
Texas
Aluminum
Systems

TAS 177

Overview developments

- Profiles

Frame profiles

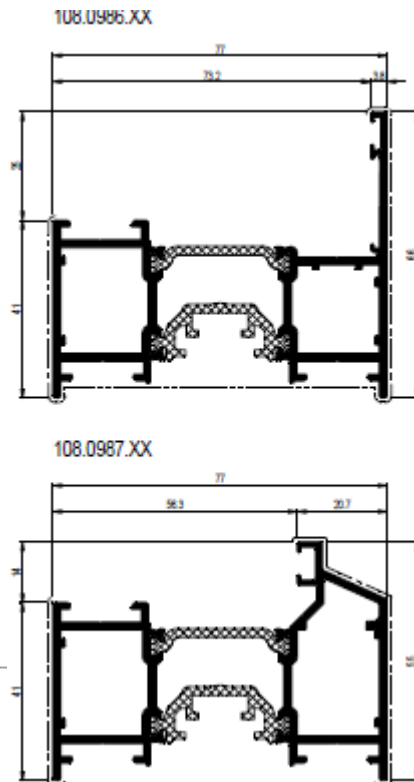


TAS 177

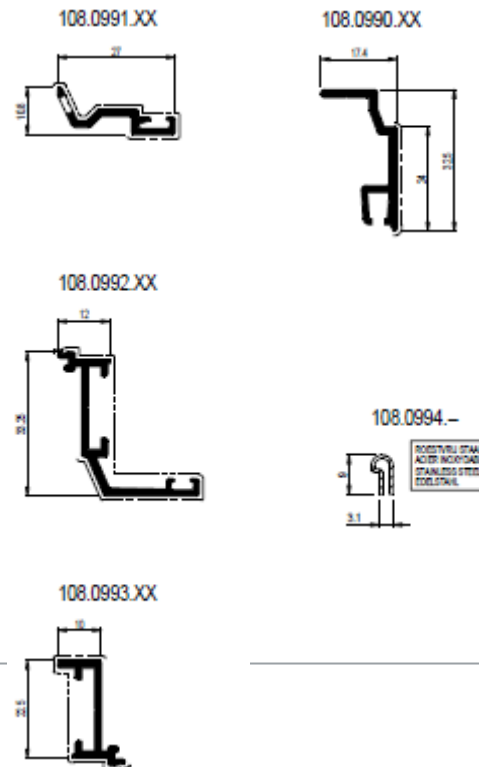
Overview developments

- Profiles

Vent profiles



Supporting profiles



TAS 177

Overview developments

- Folding accessories
 - Clampable and adjustable in height and width
 - visible parts in line with gaskets are black anodized

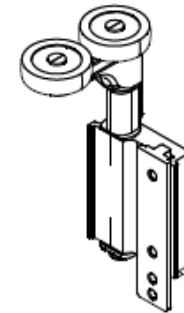
060.6732.XX



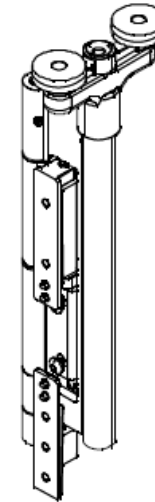
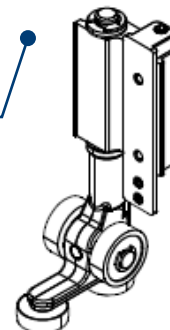
060.6733.XX



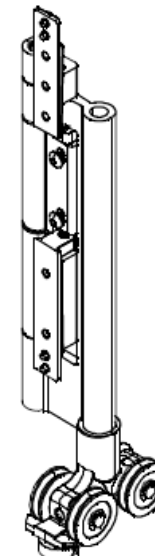
New end carriage



060.6731.39



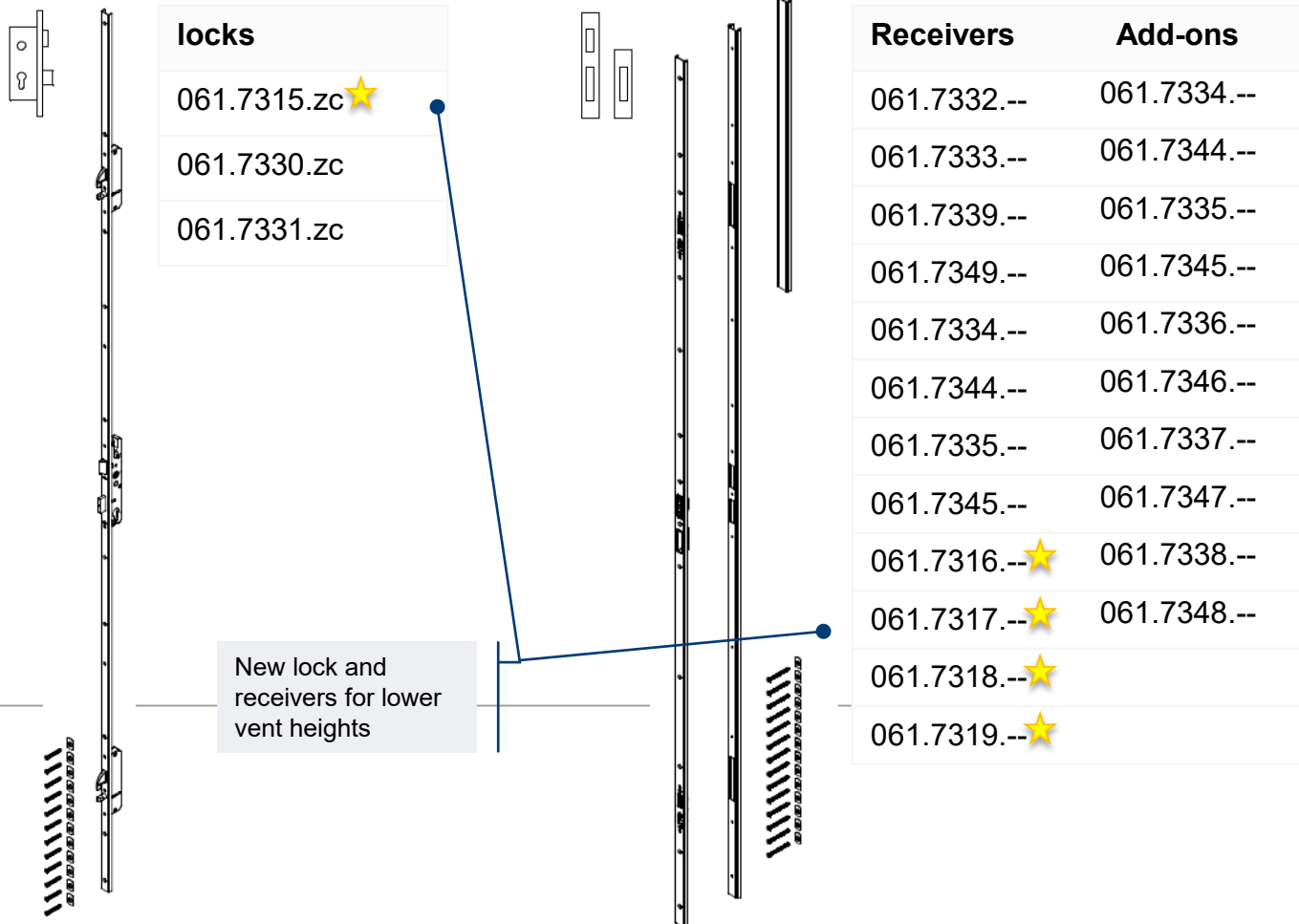
060.6730.XX



TAS 177

Overview developments

- Door locking gear: new: minimum vent height: 1550mm

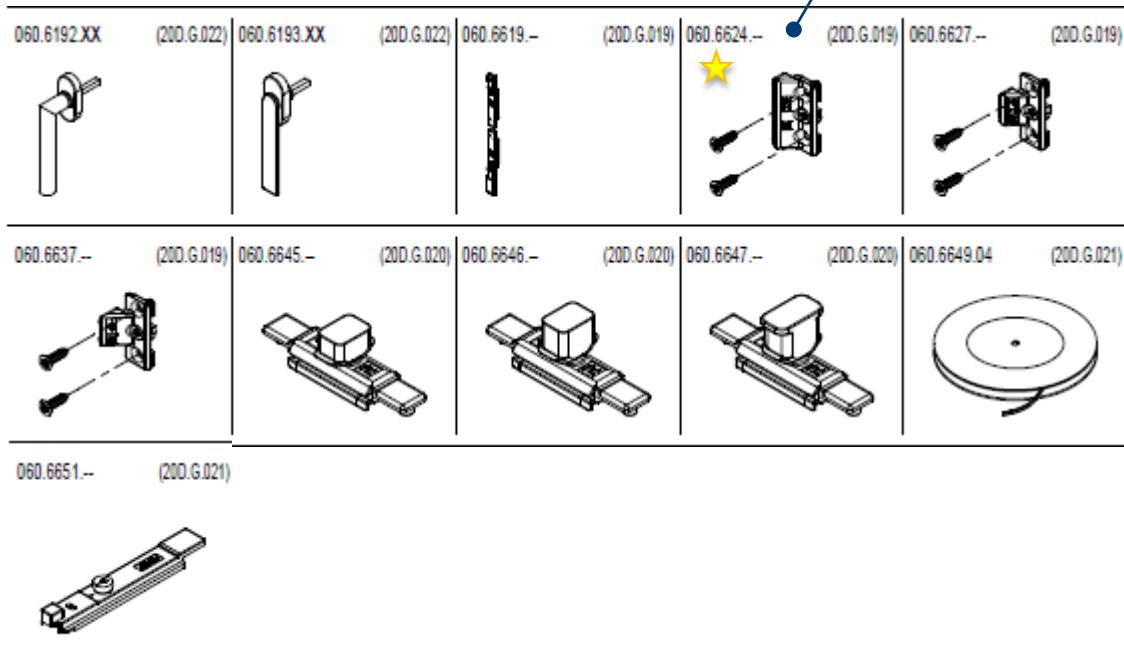


TAS 177

Overview developments

- Window locking gear

New receiver for
600 Pa watertightness
(in development)

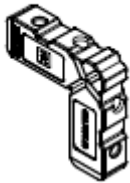


TAS 177

Overview developments

- Accessories: General

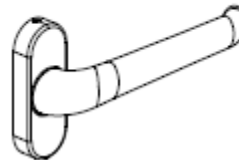
068.7891.00



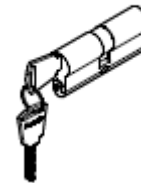
061.7132.PA



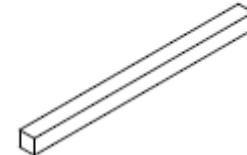
061.7133.PA



061.7033.--



061.7097.--

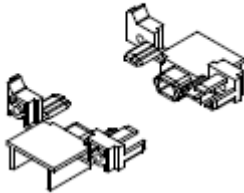


TAS 177

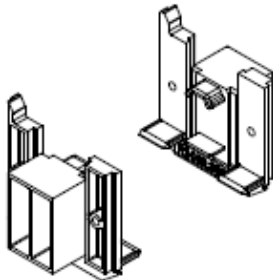
Overview developments

- End pieces

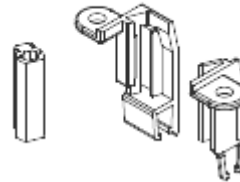
069.8600.04



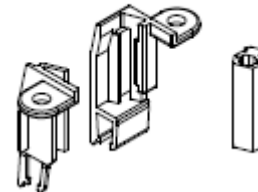
069.8604.04



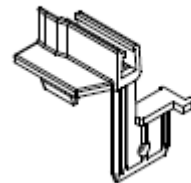
069.8607.04



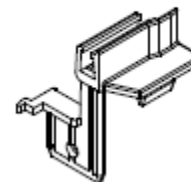
069.8610.04



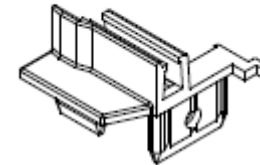
069.8624.04 ★



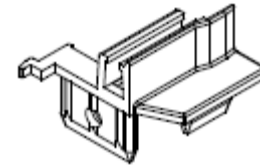
069.8625.04 ★



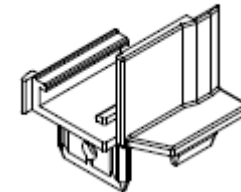
069.8620.04



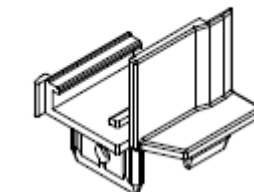
069.8621.04



069.8623.04



069.8623.04



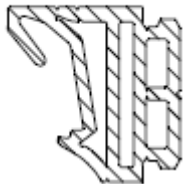
New end pieces for end carriage

TAS 177

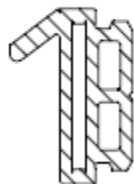
Overview developments

- Gaskets & EPDM accessories

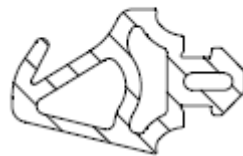
080.9060.04



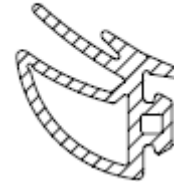
080.9061.04



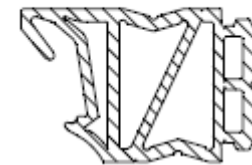
080.9062.04



080.9064.04

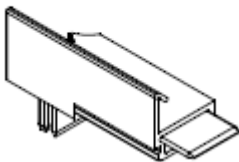


080.9063.04 ★

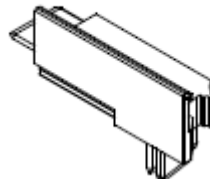


New gasket for end carriage

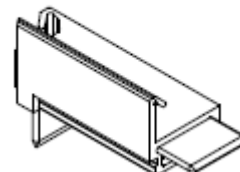
069.8634.04



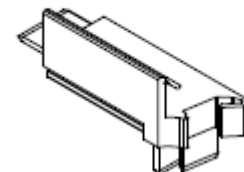
069.8635.04



069.8636.04



069.8637.04

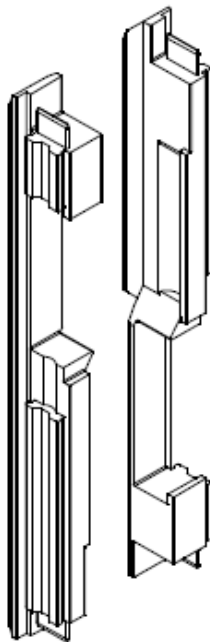


TAS 177

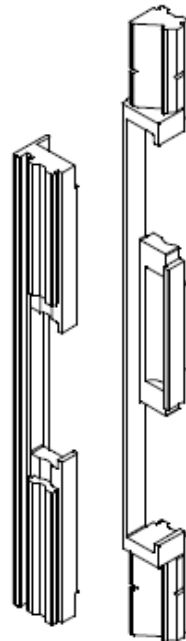
Overview developments

- New: EPDM accessories for hinges
 - Reduced fabrication time & straight cutted gaskets
 - Higher AWW rating

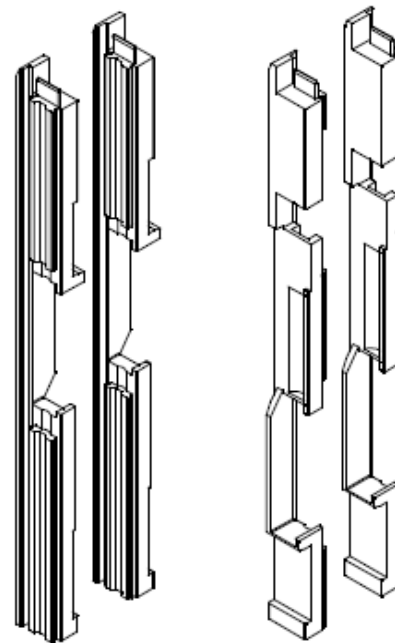
069.8585.04 ★



069.8587.04 ★



069.8590.04 ★

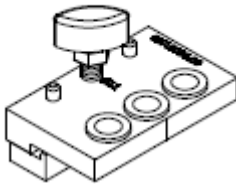


TAS 177

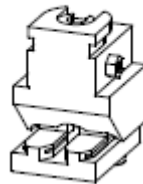
Overview new developments

- Tooling

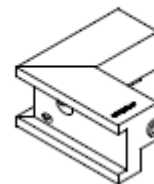
097.0006.00



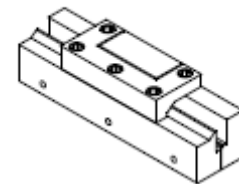
097.V900.00



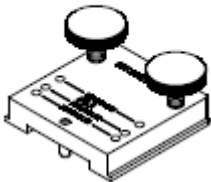
097.W100.00



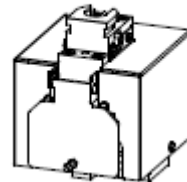
097.0011.00



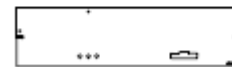
097.0007.00 (updated)



097.W000.00



095.B334.00



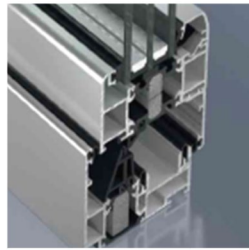
097.0012.00



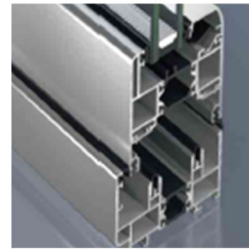
TAS 177

Competition comparison

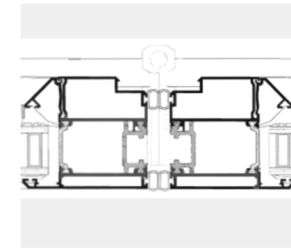
Schüco ASS 80 FD.HI



Schüco ASS 70 FD



Sapa Dualfold

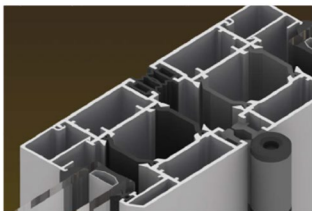


	Max. vent size (mm)	Max. vent weight	Uw (W/m²K) (3-panel) (2700x2300mm)	Visible width vent-vent sect.	Build-in depth
Texas Aluminum Systems TAS 177	48" x 118"	120 Kg	1.40 W/m²K* 1.76 W/m²K**	5 5/8"	3 1/4"
Texas Aluminum Systems TAS 177-SL	48" x 118"	120 Kg	1.37 W/m²K* 1.73 W/m²K**	4 7/8"	3 1/4"
Schüco ASS 80 FD.HI	1200 x 3000	100 Kg	1.3 W/m²K*	120 mm (Inside) 112 mm (outside)	80 mm
Schüco ASS 70 FD	700 x 3000	100 Kg	1.8 W/m²K**	120 mm	70 mm
Sapa Dualfold	1000 x 2283	100 Kg	1.9 W/m²K	/	75 mm
Solarlux SL 70 ^e	900 x 3500	100 Kg	1.8 W/m²K**	157 mm	70 mm
Solarlux SL 80	900 x 3000	100 Kg	1.6 W/m²K	104 mm	80 mm
Aliplast Visofold	1000 x 2400	80 Kg	N/A	185 mm	70/78 mm
Aliplast Panorama	1000	70 Kg		154 mm	74.5 mm
Blyweert Harmonia	100 x 2900	90 Kg	1.92 W/m²K ***	150 mm	72 mm

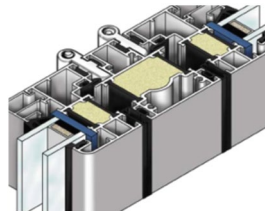
*With Ug = 0.7 W/m³K

**With Ug = 1.1 W/m²K

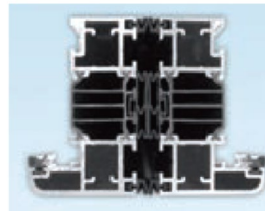
*** With Ug = 1.0 W/m²K



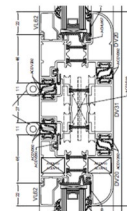
Blyweert Harmonia



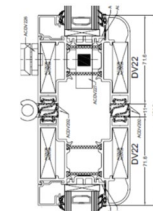
Solarlux SL 70e



Solarlux SL 80



Aliplast Visofold

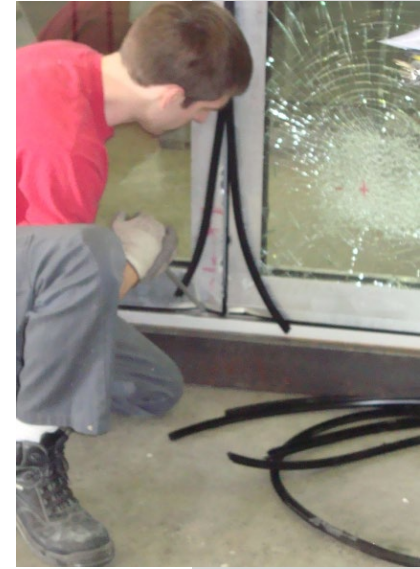


Aliplast Panorama

Texas
Aluminum
Systems

TAS 177

- Launch info
 - **WK 18:** EPDM hinge pieces
- **Q2/2011:**
 - **Extension to WK2** (subject to successful testing)
Test program covers: All configurations
Maximum dimensions
Window & door locking gear
 - **Tooling for positioning hinges**
- **Future actions**
 - RAL colour hinges





TAS 177 & TAS 177-SL